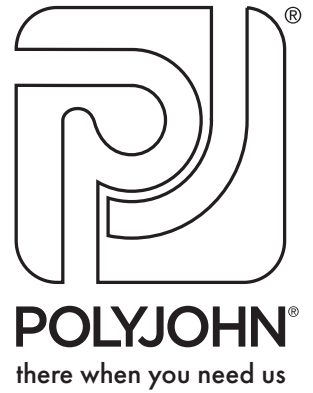


WATER WORKS™ FRESH WATER DELIVERY SYSTEM

PRODUCT INSTRUCTIONS



NOTE: We recommend reading through the entire Assembly Instructions prior to proceeding with use, service or maintenance.

PRODUCT SPECIFICATIONS

WATER WORKS™
FWD3-1000



DIMENSION	IMPERIAL	METRIC
Height	60 in	152 cm
Diameter	23 in	58 cm
Tank Capacity	93 gal	352 ltr
Pump	110 volt	1.5 amp
Weight Empty	46 lb	20.87 kg
Weight Full	822 lb	372.85 kg
Flow Rate	3.8 GPM	14.4 LPM

NOTE: All dimensions are subject to change due to environmental factors. All materials, including resin, pigments and additives used to make the plastic components as well as the plumbing components that come in contact with the fresh water are U.S. FDA food grade compliant.

This self-contained fresh water delivery system is designed to attach to existing plumbing in a temporary setting such as office trailers, portable showers, etc. and is made of tough impact resistant polyethylene. The system features an on-demand, self priming, intermittent duty pump controlled with an adjustable time delay relay (TDR) set to run five minutes before shutting off. If the pump runs for longer than 5 minutes, the TDR will cut power off to the pump and will have to be reset. This is done by disconnecting the power to the unit, and then reconnecting. It also features a water fill float valve that shuts off when the tank is full, and a (GFCI) ground fault circuit interrupter electrical plug rated at 15 amps.

CAUTION:

DISCONNECT FROM POWER SOURCE PRIOR TO PERFORMING ANY MAINTENANCE OR SERVICE WORK

WATER WORKS™ FRESH WATER DELIVERY SYSTEM

PolyJohn's Water Works Fresh Water Delivery System provides 93 gallons of fresh water for use in portable showers, portable sinks, and freshwater-flush portable toilets. It's the perfect accessory for office trailers, food service trailers, workshops, and lunchrooms.

The Water Works has a built-in, on-demand pump that operates on regular household current, and the circuits are protected by GFCI and a low-water electrical shut-off. Its lightweight construction (46 pounds empty) and space-saving design (60" high by 23" wide) make it a breeze to transport and store. The tank is semi-transparent, so it's easy to monitor the water level. Cleaning the Water Works is simple. Water can be quickly drained through its 1" valve, and a 10" diameter cover on the top of the tank allows easy access to the interior.

SET-UP OPERATION INFORMATION

WATER WORKS™
FWD3-1000

Review the Exploded Parts Drawing

(For shipping purposes items are sent loose in the same bag as the instructions.)

- Step 1. Remove the phillips screws from the pump cover. Remove the cover. Unwind the electrical cord. (Do not plug in at this time).
- Step 2. Attach the float to the rod. Screw the float/rod assembly onto the float valve.
- Step 3. Place a steel clamp onto the end of the 16" long discharge tube and push the end of the hose onto the fitting that is attached to the pump and tighten the clamp. Place another clamp on the opposite end of the discharge tube, insert the barbed end of the loose fitting in the end of the hose and secure in place with the clamp.. The fitting may now be connected to a plumbing source.
- Step 4. Replace the cover. (Be sure the cord and hose are in their molded in channels.)
- Step 5. Fill the tank with fresh water. This tank can be filled by inserting a hose into the hatch or through a plumbed line. If you are using plumbed lines connect your piping to the 3/4" fresh water fill port. This port is equipped with a float shut-off valve that will "shut-off" when the tank reaches its 93 gallon capacity. Depending on the size and length of the hose, estimated fill time is 7 to 20 minutes. The overflow port should be plumbed the same way as the fresh water fill port, which will give the service operator a visual indication that the tank has reached its 93 gallon (352L) capacity.
- Step 6. Plug the GFCI cord into a GFCI protected outlet making sure the reset button is pressed. Deplete the air from the system, either by turning on a sink and leaving on until the air is gone or flushing a toilet until water begins to flow. (If this takes more than five minutes to complete press the reset button on the GFCI cord to reset the pump.)

CAUTION ELECTRICAL HAZARD - Electrical wiring to be performed by a qualified electrician, in accordance with all local codes.

TROUBLE SHOOTING INFORMATION

Pump Is Not Operating:

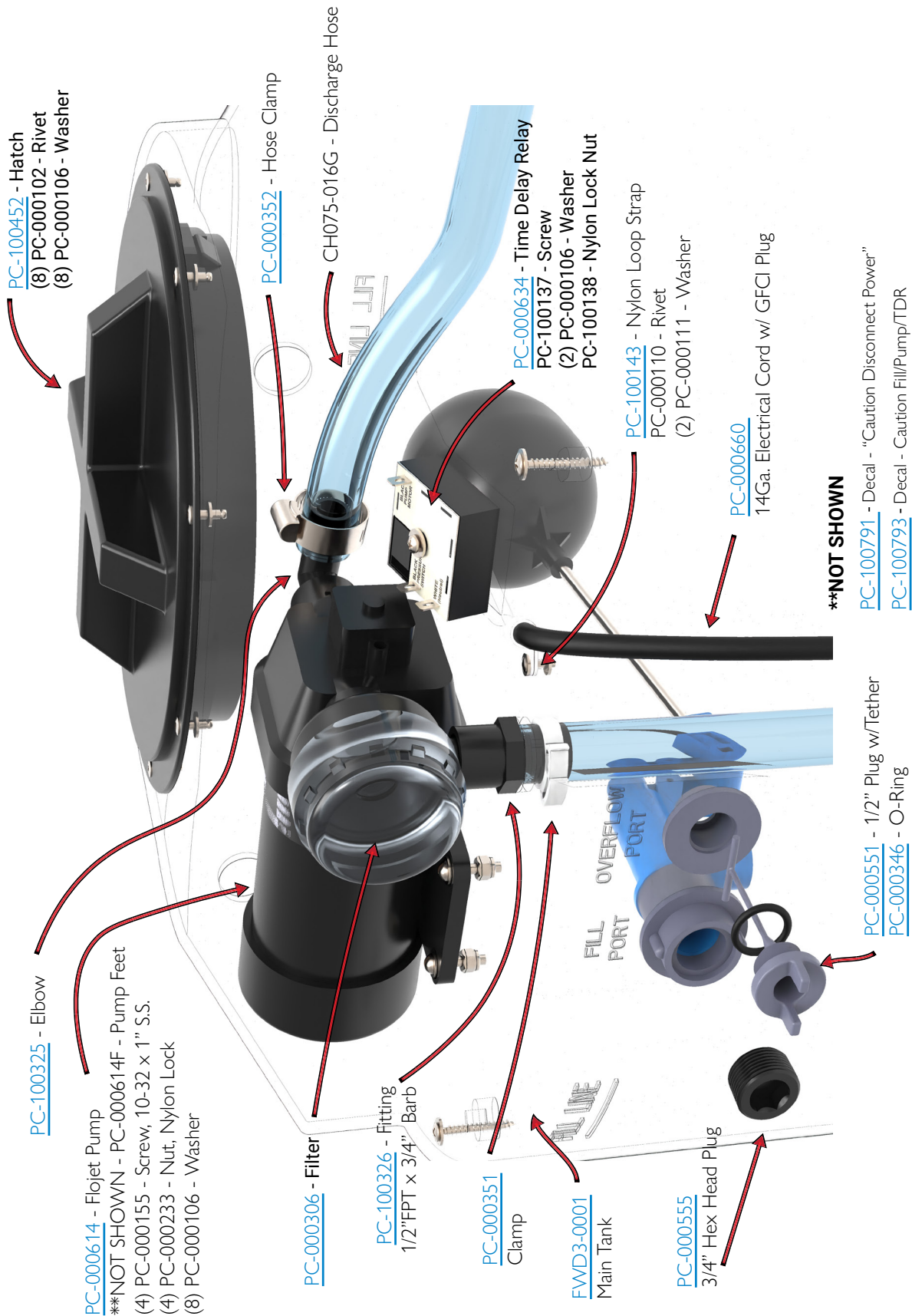
- The system may be fully primed. Turn on a faucet or flush the toilet to see if the pump kicks on.
- Check the GFCI plug - Is it completely plugged in and the reset depressed?
- Reset the TDR by unplugging the unit and then plugging it back in.
- Check the water level.

Pump Is Not Shutting Off:

- Check your plumbing connections - Are they tight so there is no air in the lines?
- Check your fixtures - Is your toilet continually running?
- Check for leaks in the system.

PARTS DIAGRAM

WATER WORKS™
FWD3-1000



PARTS DIAGRAM

WATER WORKS™
FWD3-1000

[PC-100789](#) - Serial I.D. Plate
(2) PC-000110 - Rivet
(2) PC-000111 - Washer

[FWD3-0002](#) - Pump Cover
(2) PC-000158 - Screw
(2) PC-000106 - Washer

[PC-100326](#) - Fitting
1/2" FPT x 3/4" Barb
[PC-000352](#)
Hose Clamp

[PC-000360](#)
Float Valve Shutoff

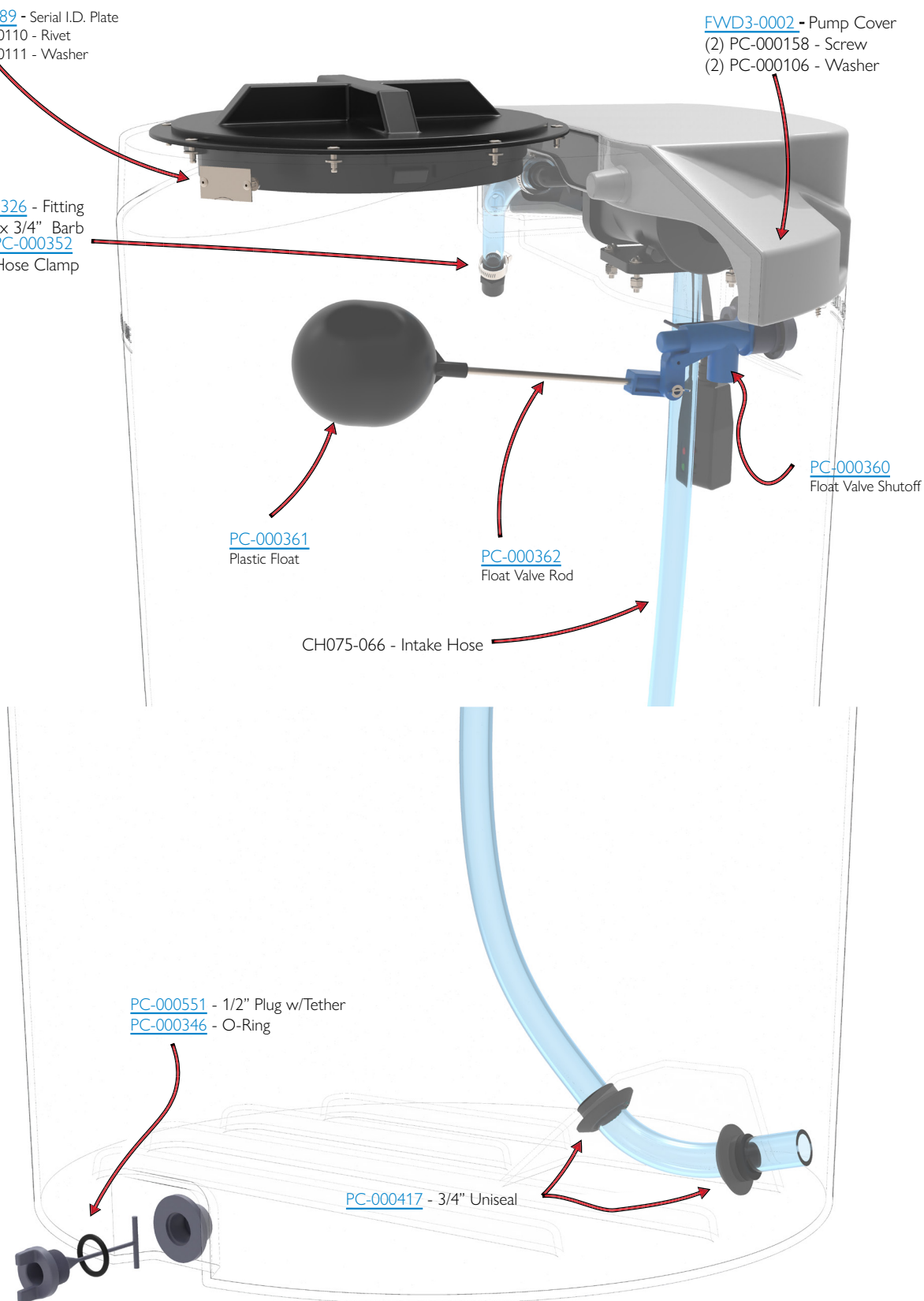
[PC-000361](#)
Plastic Float

[PC-000362](#)
Float Valve Rod

CH075-066 - Intake Hose

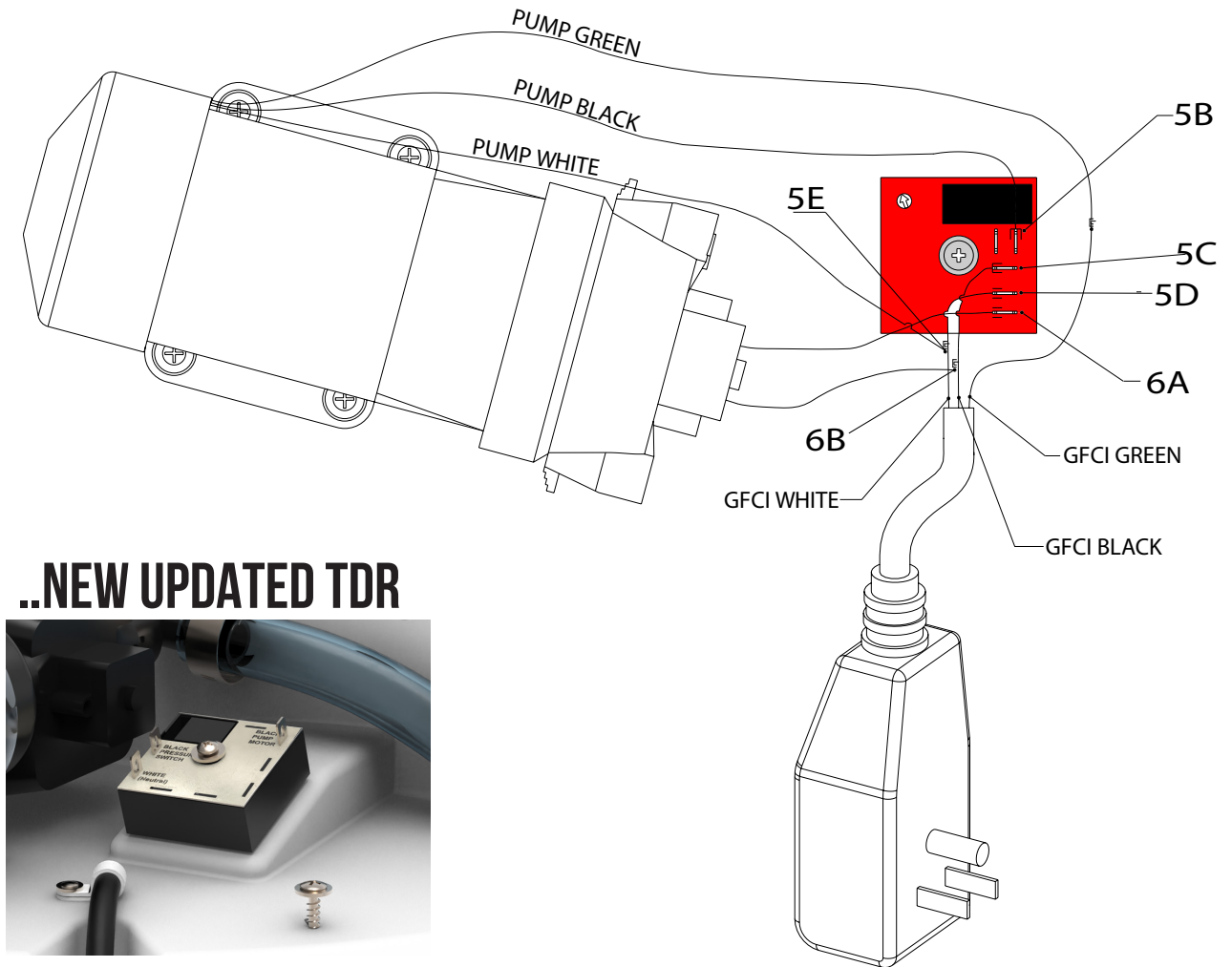
[PC-000551](#) - 1/2" Plug w/Tether
[PC-000346](#) - O-Ring

[PC-000417](#) - 3/4" Uniseal



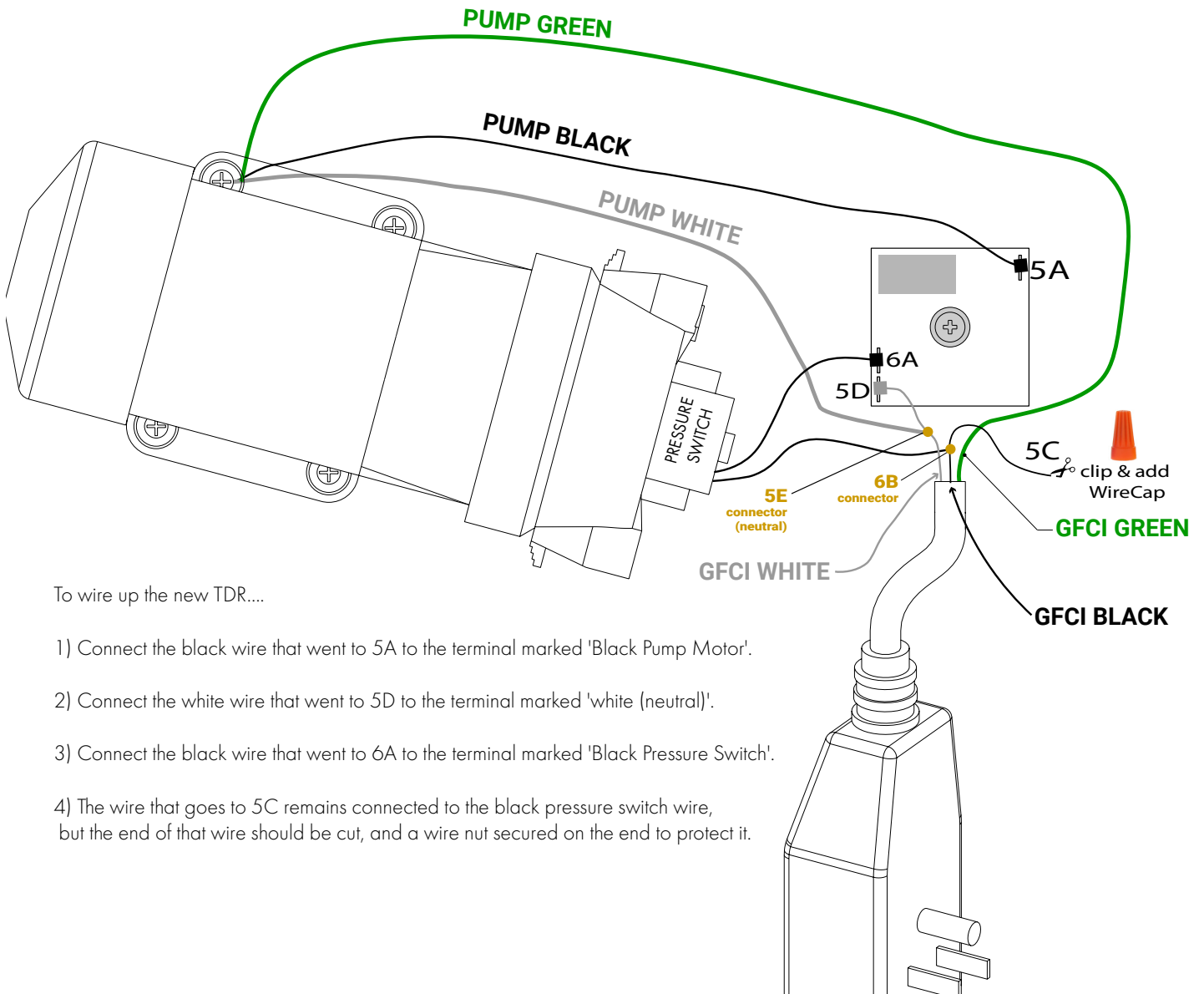
REPLACING THE OLD TDR WITH NEW UPDATED TDR

Wiring diagram for the older orange TDR



..NEW UPDATED TDR





To wire up the new TDR....

- 1) Connect the black wire that went to 5A to the terminal marked 'Black Pump Motor'.
- 2) Connect the white wire that went to 5D to the terminal marked 'white (neutral)'.
- 3) Connect the black wire that went to 6A to the terminal marked 'Black Pressure Switch'.
- 4) The wire that goes to 5C remains connected to the black pressure switch wire, but the end of that wire should be cut, and a wire nut secured on the end to protect it.

OPTIONAL ACCESSORIES, SUPPLIES AND CHEMICALS

WATER WORKS™
FWD3-1000



Water Works Extra Tank
FWD1-0500



250 Gallon Holding Tank
HT01-0250



300 Gallon Holding Tank
HT01-0300

CLEANING AND MAINTENANCE

Use a mild soap to clean all surfaces and component parts.

Minor scratches and abrasions can be lightly sanded or scrubbed with a mild abrasive cleaner (such as "Soft Scrub") that contains calcium carbonate, hypochlorate bleach, and detergents. Be sure to follow the cleaning product directions since these ingredients may cause hazardous gases when mixed with other chemicals. Rinse the cleaned areas and buff with a conventional wax.

Some light scratches may also be hidden by using an industrial hot air gun.

For a source of cleaning, deodorizing and paper products contact:

PRO'S CHOICE
2500 GASPAR AVE.
WHITING, IN 46394-2175
800-292-1305
www.polyjohn.com/products/supplies/pros-choice.html

We highly recommend membership in the Portable Sanitation Association International (PSAI); the worldwide authority on portable sanitation services. The PSAI, "Portable Sanitation Industry Certification Program" manual contains a wealth of information on standards and service procedures. For more information contact the PSAI:

PORTABLE SANITATION ASSOCIATION INTERNATIONAL (PSAI)
7800 METRO PARKWAY, SUITE 104
BLOOMINGTON, MINNESOTA 55425 USA
800-822-3020 / 612-854-8300 FAX 612-854-7560
www.psa.org

Prop 65

PolyJohn Corporation would like to inform any customers or end users that some products may contain chemicals listed in California's Safe Drinking Water & Toxic Enforcement Act of 1986. Commonly referred to as Proposition 65, this Act establishes a list of chemicals known by the State of California to present a risk of cancer, birth defects, or other reproductive harm.

Chemical exposure typically occurs through inhalation, ingestion, or adsorption. PolyJohn products are not intended to be used in these methods. PolyJohn Corporation cannot foresee all uses of their products (both intended and unintended uses) and as a result has opted to provide a general warning of known chemical presence.

The Proposition 65 chemical list can be found at <http://www.P65Warnings.ca.gov>

The following warnings are labels placed on affected products. If these labels are not present then they do not apply to that product.



WARNING: This product can expose you to chemicals including 4-Vinylcyclohexene which is known to the State of California to cause cancer and birth defects or other reproductive harm. For more information go to www.P65Warnings.ca.gov.

4-Vinylcyclohexene label above to be used any product made with Bayblend T85



WARNING: This product can expose you to chemicals including titanium dioxide, which is known to the State of California to cause cancer. For more information go to www.P65Warnings.ca.gov.

Conflict Minerals Compliance Statement

Section 1502 of the Dodd-Frank Wall Street Reform and Consumer Protection Act, and the Securities and Exchange Commission Rules adopted in connection therewith, require certain corporations to report the use of "Conflict Minerals" in the manufacture of their products. Generally, Conflict Minerals collectively refers to cassiterite, columbite-tantalite, gold, wolframite, or their derivatives, including tantalum, tin and tungsten, which originate from the Democratic Republic of the Congo or specified adjoining countries (referred to herein as "Covered Countries").

While we, as a privately held corporation, are not subject to the Conflict Minerals rules and reporting requirements, we understand that our customers may be, and we are committed to helping our customers comply with their reporting requirements. In order to determine if our manufactured products contain Conflict Minerals, we have asked our relevant suppliers, as of September 1, 2020, to ascertain their use of any Conflict Minerals in the materials they supply to us. Their responses demonstrate that our relevant suppliers (i) do not use Conflict Minerals in the materials they supply to us, (ii) have no reason to believe the Conflict Minerals they use may have originated in the Covered Countries, and/or (iii) reasonably believe that the Conflict Minerals they use are from recycled or scrap sources. Consequently, we can in turn represent that, to the best of our knowledge, our manufactured products either do not contain Conflict Minerals, or to the extent they may, such products are "DRC conflict free" as defined by paragraph (e)(4) of Section 1502.

We will continue to work with our key suppliers to ensure that we are able to identify the use of Conflict Minerals in our supply chain, and the representations made in this compliance statement remain accurate. To that end, we reserve the right to amend this statement at any time based on subsequent developments or information.

Should you have any questions or concerns regarding this statement, please do not hesitate to contact us.

FREQUENTLY ASKED QUESTIONS

WATER WORKS™
FWD3-1000

Tanks

Q: How do I plumb to a holding tank?

A: Depending on your model holding tank you may have many different ports to choose from. They are the cylinders on the holding tanks. Depending on your location and set up you will cut the end off one of those cylinder ports and use fernco rubber fittings to attach PVC plumbing to the holding tank.

Q: How can I clean the inside of the tank?

A: PolyJohn sells a PROs Choice chemical designed to drop into the tank and it cleans the inside.

Q: Why does my freshwater delivery system pump keep kicking on?

A: That is completely normal. The pump needs to intermediately kick on to release pressure within the tank. The pump is not malfunctioning.

Q: My GFCI plug on my heated sink keeps popping, is something wrong with it?

A: Are you plugging the GFCI plug into a GFCI outlet? If you are then it will keep popping. A GFCI plug will not work in a GFCI outlet. It needs to be a standard outlet.

Q: Where exactly is the gray water going? Are they the same tank?

A: No, they are not the same tank. The fresh water tank and gray water tank are completely separate in all of our sink models. You don't have to worry about cross contamination.

WARRANTY

WATER WORKS™
FWD3-1000

RESTROOMS AND TOILETS

POLYJOHN PORTABLE RESTROOMS LIMITED 3 YEAR PRODUCT WARRANTY

PolyJohn Enterprises Corp. warrants the major plastic parts of its portable restrooms (plastic front, wall panels, roof, and tank) against any breakage or other problems that prevent the PolyJohn portable toilet from functioning in accordance with usual practices used in the portable toilet industry and in their intended manner. This warranty covers any damages in material or workmanship for a total period of 3 years (36 months). This warranty extends only to the original purchaser of the PolyJohn portable restroom. Proof of purchase, serial numbers, and photos will be required.

SINKS, TANKS, TRAILERS AND SANISTANDS

PolyJohn Enterprises warrants our sinks, tanks, trailers and sanistands from the date of purchase. Any misuse or abuse of our products or failure to properly follow recommended procedures shall void this warranty. The warranty is a 1 year limited warranty and a 90 day limited warranty for components thereof.

What is Not Covered By Warranty

This warranty does not cover damage or failure contributed to or caused by: Not following PolyJohn assembly procedures, unauthorized modification, acts of God, mishandling, misuse, use of incompatible solvents or other damaging chemicals, vandalism or accident. In no event shall PolyJohn be liable for labor costs or for incidental or consequential damages.

For full details on PolyJohn's warranty policy, and to view instructions for submitting a claim please visit <https://www.polyjohn.com/warranty/>.

Warranty Disclaimer

PolyJohn's terms of sale are FOB (Free on Board Shipping Point). Meaning buyer takes on responsibility once it leaves PolyJohn's shipping dock. The carrier is wholly responsible for any damage incurred during transit. Important notice: All concealed/non-notated damages must be reported within 5 business days of delivery (1st day is the day of delivery) as per the National Motor Freight Classification (NMFC) – Rule 300100 - for a damaged claim to be filed. Reporting after this time will void a claim.

In order to prevent warranty disputes follow these steps immediately when receiving your products:

Inspect the shipment immediately and insist that visible damages be indicated on your copy of the freight bill. If they are not noted on the freight bill it is very likely a claim will be denied.

Open the shipment if necessary, and inspect for any concealed damages.

If there are any damages that you cannot operate with you may refuse shipment. After you do this contact us immediately

Filing Process for Warranty

PolyJohn reserves the right to request inspection of products for verification of defect, which may include returning some or all of the parts with shipping paid for by the purchaser. Once the items have been returned, inspected, and PolyJohn is found at fault shipping costs will be reimbursed. You may contact PolyJohn to arrange for return shipping if desired.

To file your warranty claim follow these steps:

1. Go to polyjohn.com/warranty/
2. Fill out necessary contact information
3. Fill in invoice number, date of purchase, product, and product serial numbers.
4. Upload an images of affected products
5. Submit and someone will be in contact with you as soon as possible.

OUR MISSION STATEMENT

"PolyJohn is a family owned, state of the art, plastics manufacturing company dedicated to providing its employees with a work environment committed to excellence, and its customers with innovative products, services and technology that meet or exceed their requirements."

THANK YOU FOR PURCHASING POLYJOHN PRODUCTS!



POLYJOHN®
there when you need us

POLYJOHN USA
+1 800-292-1305
Whiting, Indiana
www.polyjohn.com

POLYJOHN INTERNATIONAL
UNITED KINGDOM
+44 (0) 1937-583333
Yorkshire, England
www.polyjohn.co.uk

POLYJOHN CANADA
+1 800-465-9590
Oro Medonte, Ontario
www.polyjohn.ca
www.fr.polyjohn.ca

POLYJOHN LATIN AMERICA
+01 800-953-1307
Chihuahua, Mexico
www.polyjohn.mx

POLYJOHN AUSTRALIA
+61 7 3277 5727
Brisbane, Australia
www.totalsanitationsolutions.com.au

POLYJOHN SOUTHERN AFRICA
+27 (011) 615-3804
Johannesburg, South Africa
www.polyjohn.co.za

POLYJOHN NEW ZEALAND
+64 (0)22 387 7142
Auckland, New Zealand
www.polyjohn.co.nz

POLYJOHN SOUTH AMERICA
+57 318 696 7744
Bogotá, Colombia
www.polyjohn.com

POLYJOHN INTERNATIONAL
CZECH REPUBLIC
+420 608 876 983
Karlovy Vary, Czech Republic
www.polyjohn.eu